



The Mediterranean Forecasting System

Toward Environmental Prediction

XBT Launching Procedures

In order to assure an high quality of data and apply the quality control procedures developed in MFS, it is necessary to have homogeneous data acquisition procedures in the different ships used in the framework of MFS-VOS. Personnel participating to the project has experience now, but some few reminders are necessary, considering also some changes adopted in data acquisition and quality control of data.

1. Extended use of XBT wire. This can be obtained by setting the terminal depth in the Sippican software. This has to be done by clicking **Options**, then **Probe**, select the probe type (e.g. Deep Blue), click **More** and set **Terminal Depth** to **1000 m** (see figure 1). The new terminal depth will be written in red in the 'XBT Probe' window. In case the temperature value is higher than 32°C, or has negative values, stop the data acquisition.

2. Metric System. Check that the system parameters are in **Metric** and **Standard Storage**. This has to be done by clicking **Options**, then **System** and select the appropriate values (see figure 2).

3. No Filtering of Data. It is necessary that data are not filtered and be at full resolution, otherway the MFS-VOS software will not work appropriately. This can be checked by clicking **Options**, then **Post-Processing** and check that 'Automatically Calculated Noise Reduced Profiles' and 'Automatically Calculated Averaged Profiles' are not selected (see figure 3).

Necessary information for data management

There is other information that is useful for the control of quality of XBT data.

- Provide to Franco Reseghetti (ENEA) – reseghetti@santateresa.enea.it - information on the estimated height of the launch position in each ship. The calculation of probe depth is depending on launch position (among other variables).

- Provide both EDF and RDF files to the MFS-VOS data collection center – ENEA.

- During the monitoring, many different ships are used. Remember to send the name and ship call sign to MFS-VOS data collection center – ENEA.

- Information and data has to be sent to the following address:

vosdata@santateresa.enea.it

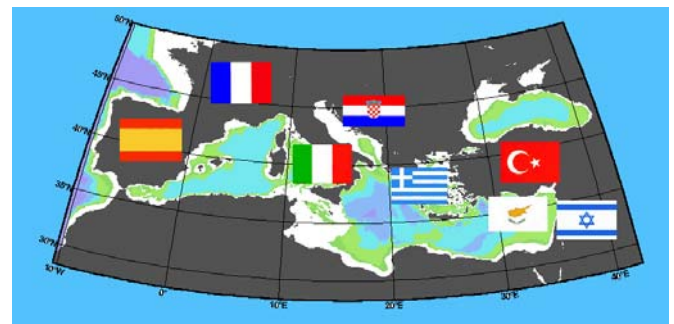
and cc to reseghetti@santateresa.enea.it

- For any inquire contact Franco Reseghetti.

Information on MFSTEP: www.bo.ingv.it/mfstep/

Access to real time data:

<http://vosdata.santateresa.enea.it:54321/mfs/>



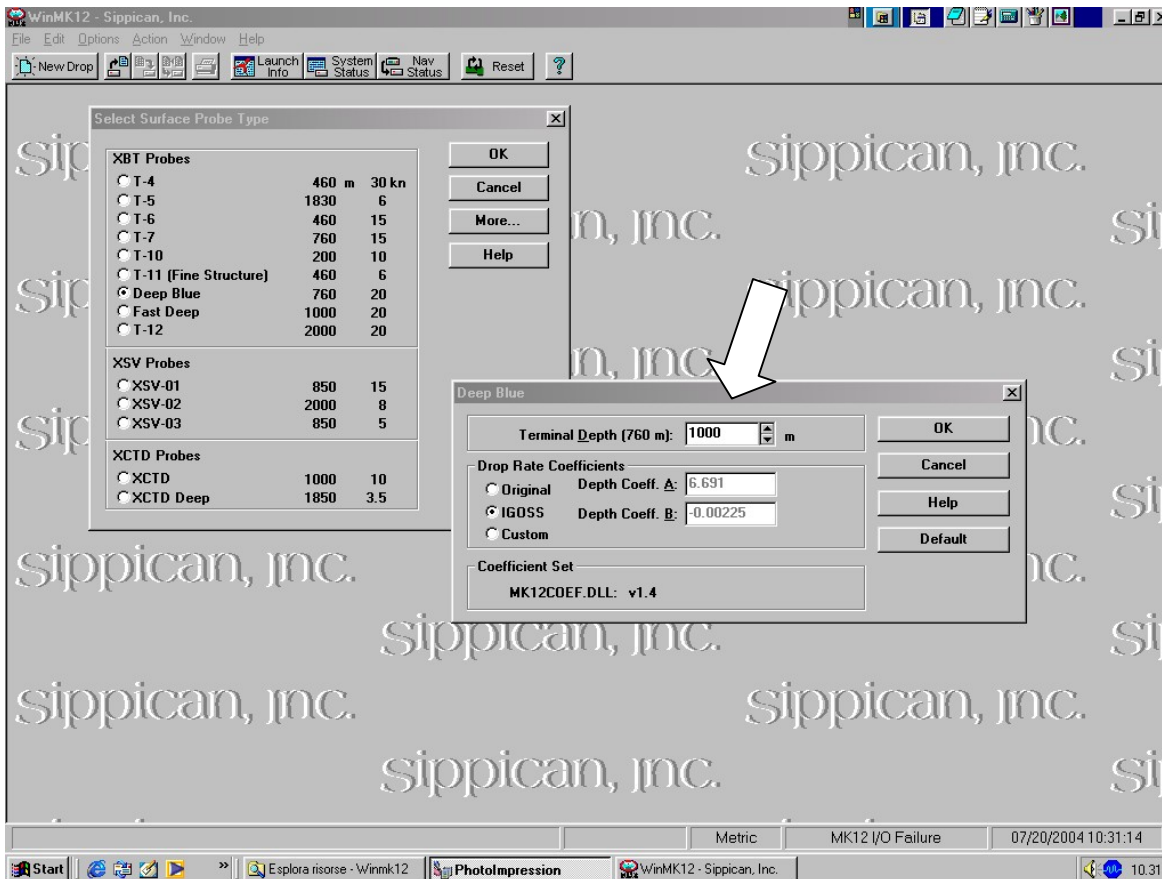


Figure 1. Setting the **Terminal Depth**. Check also the use of **IGOSS Drop Rate Coefficients**.

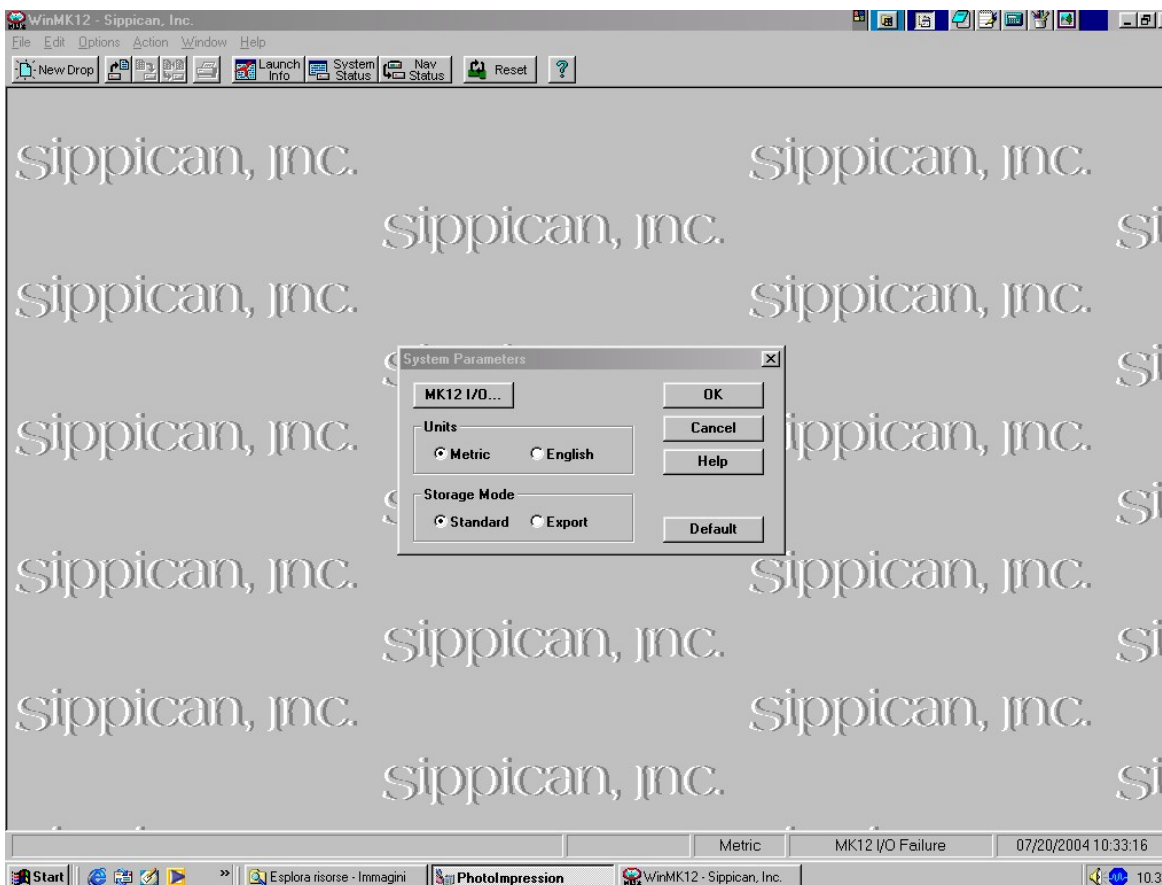


Figure 2. Setting **Metric** and **Storage**

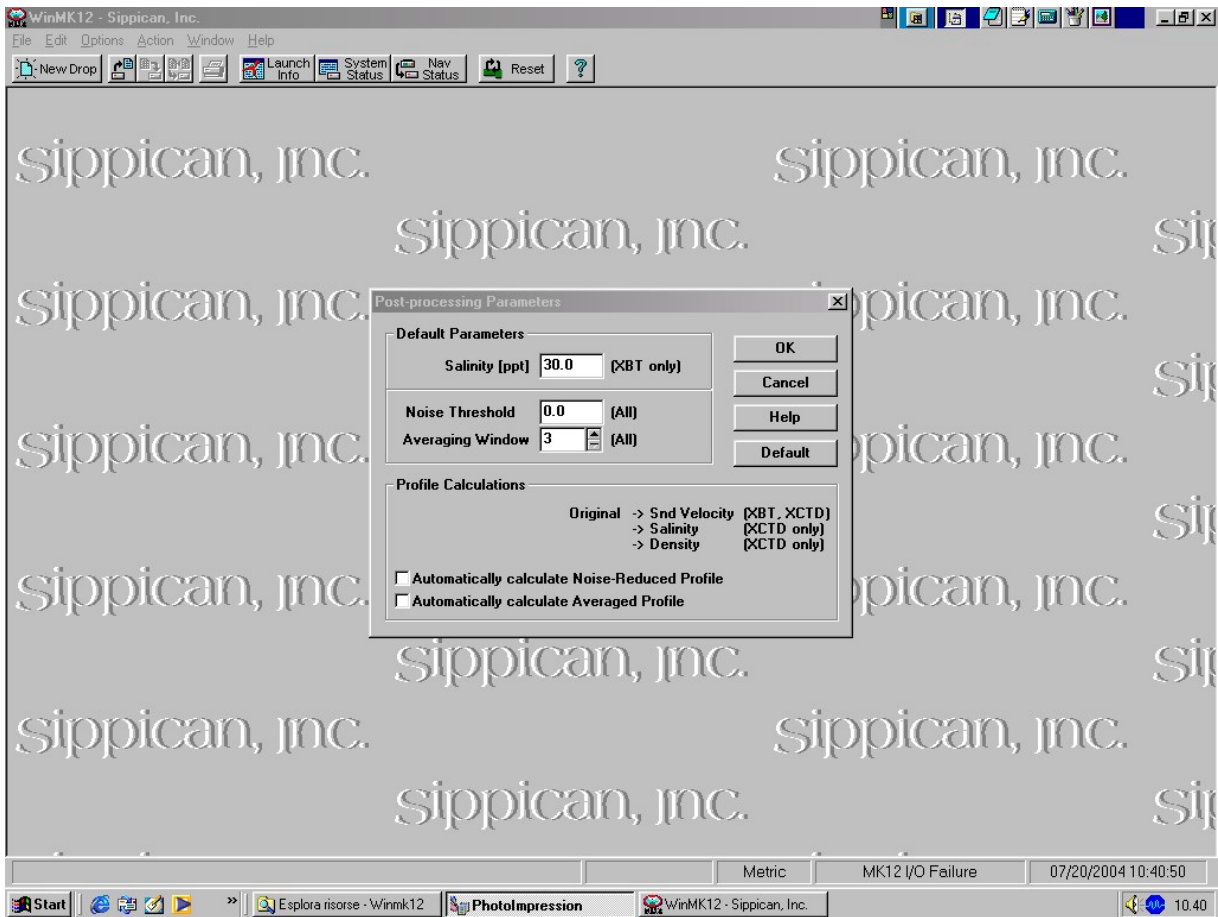


Figure 3. Setting the **Post-Processing**. Elimination of any filter.